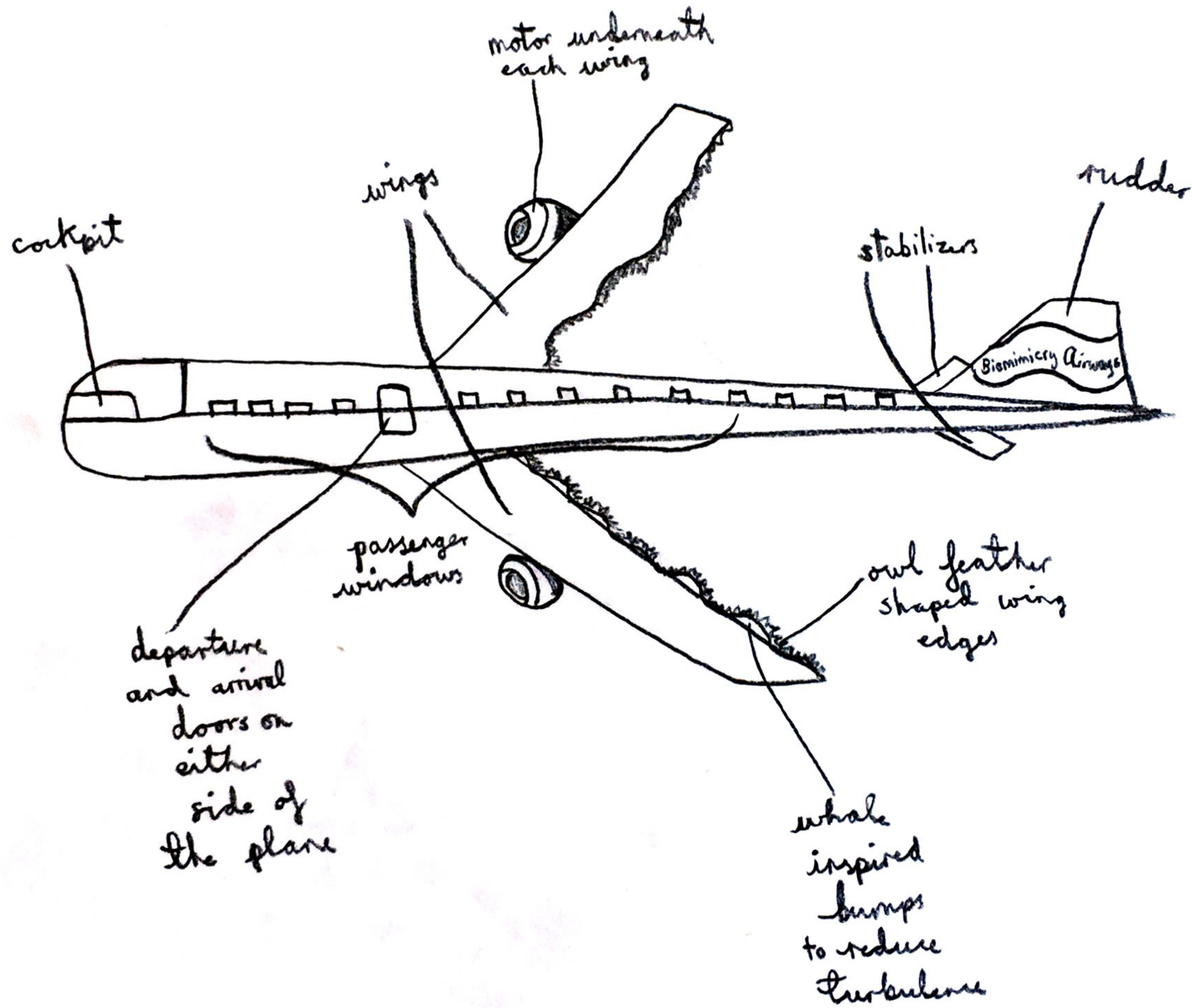
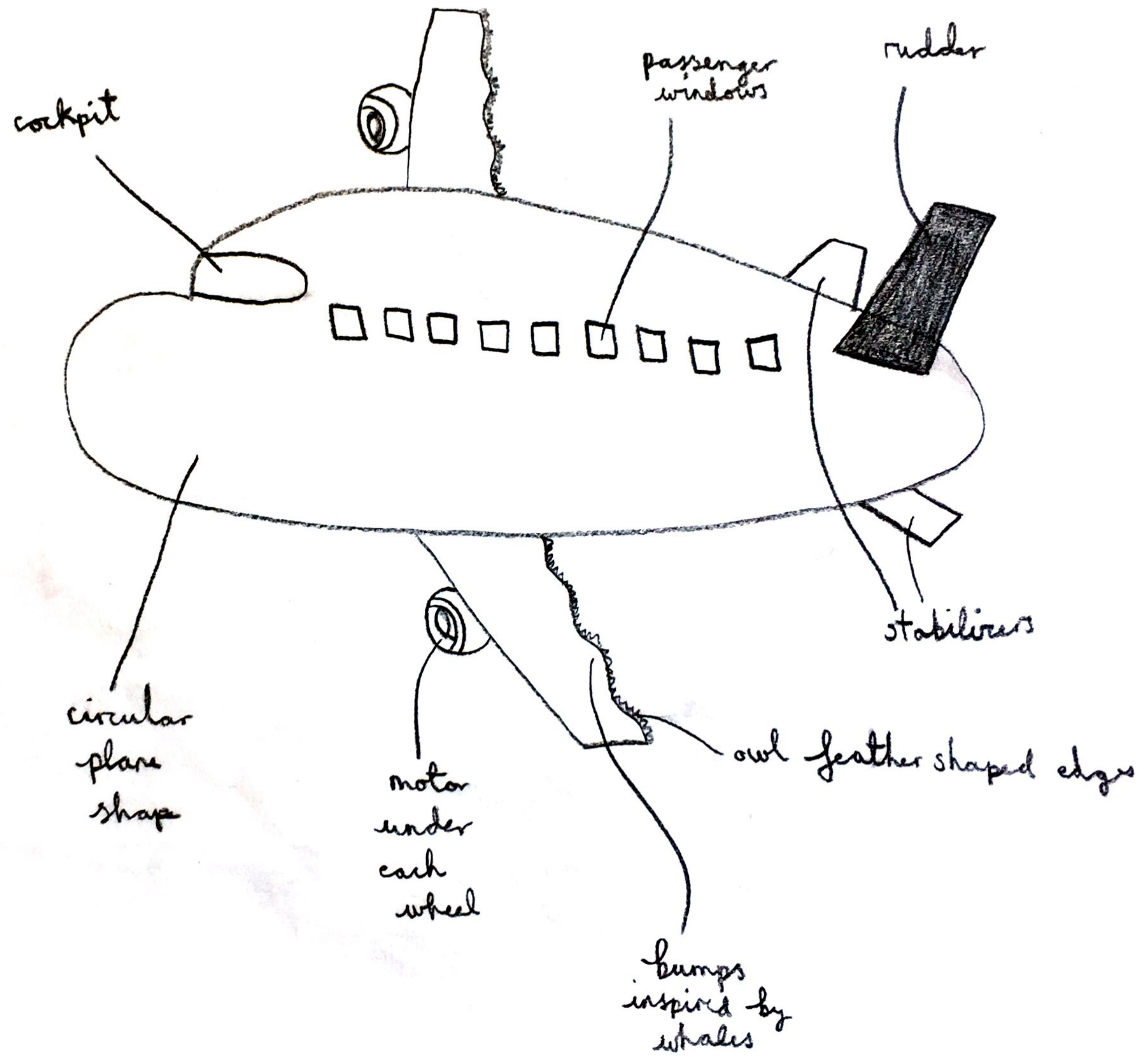


# Plane Model #2

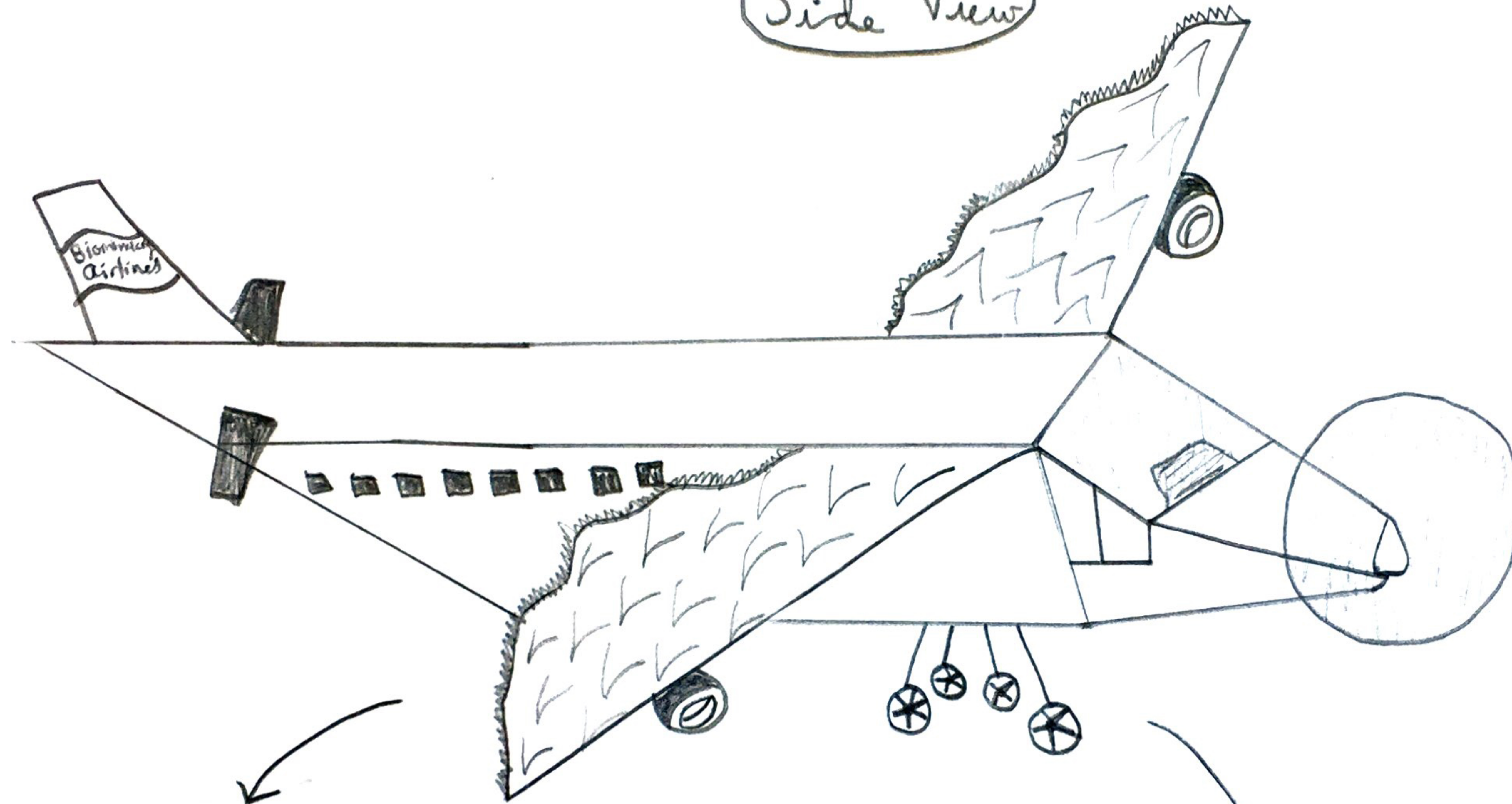


# Plane Model #3

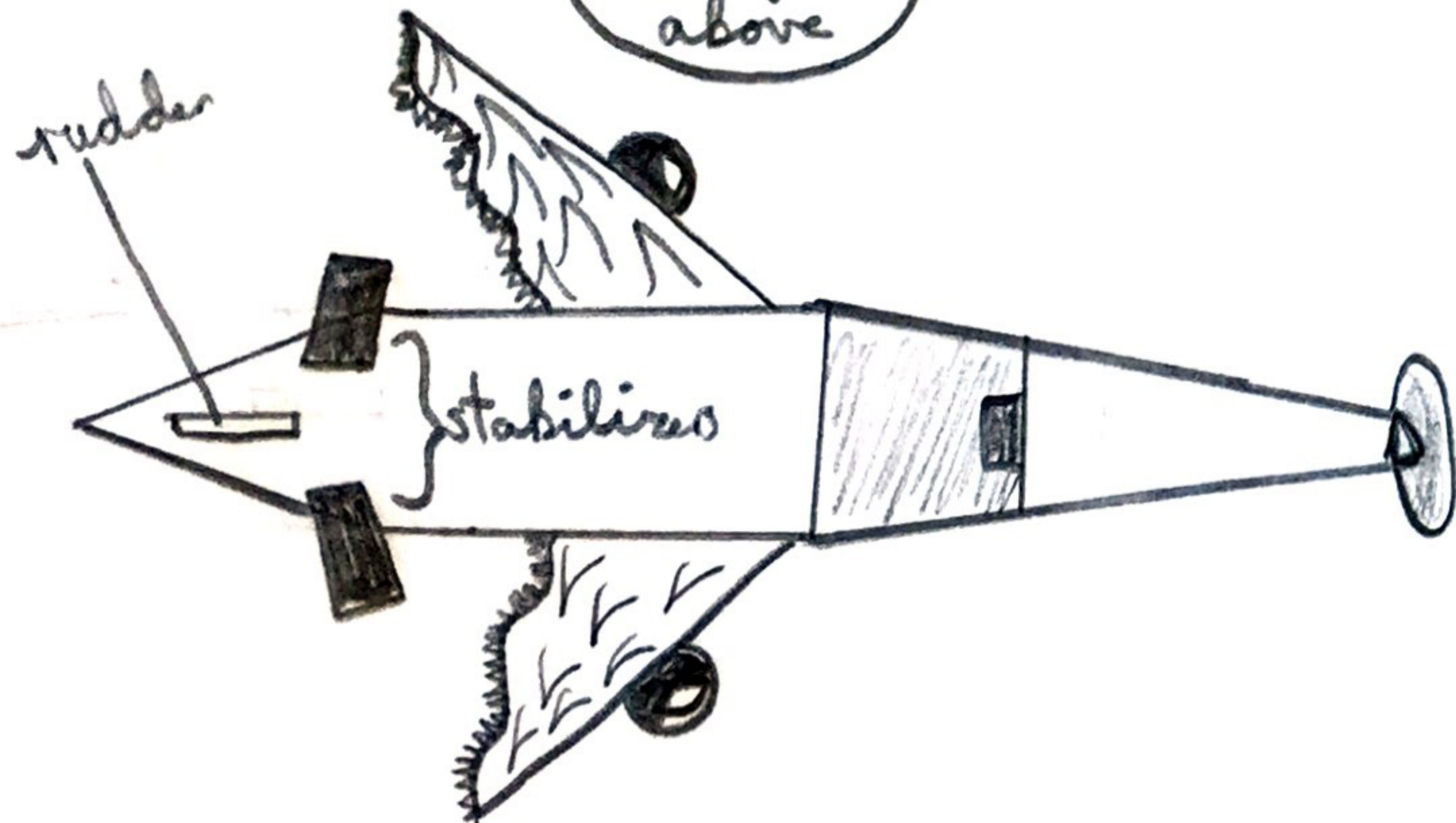


# Orthographic Views of my Final Design

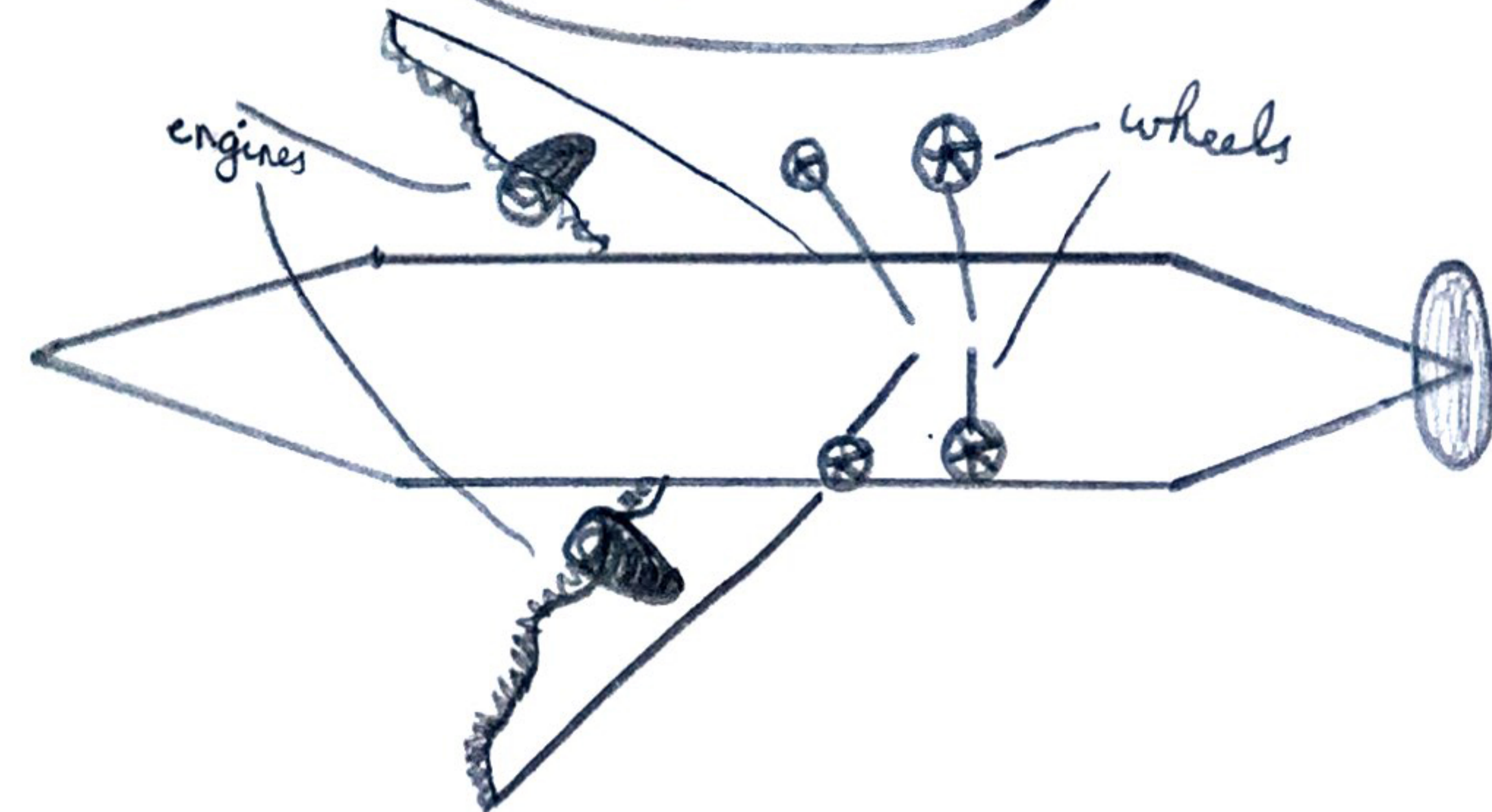
Side View



View from above



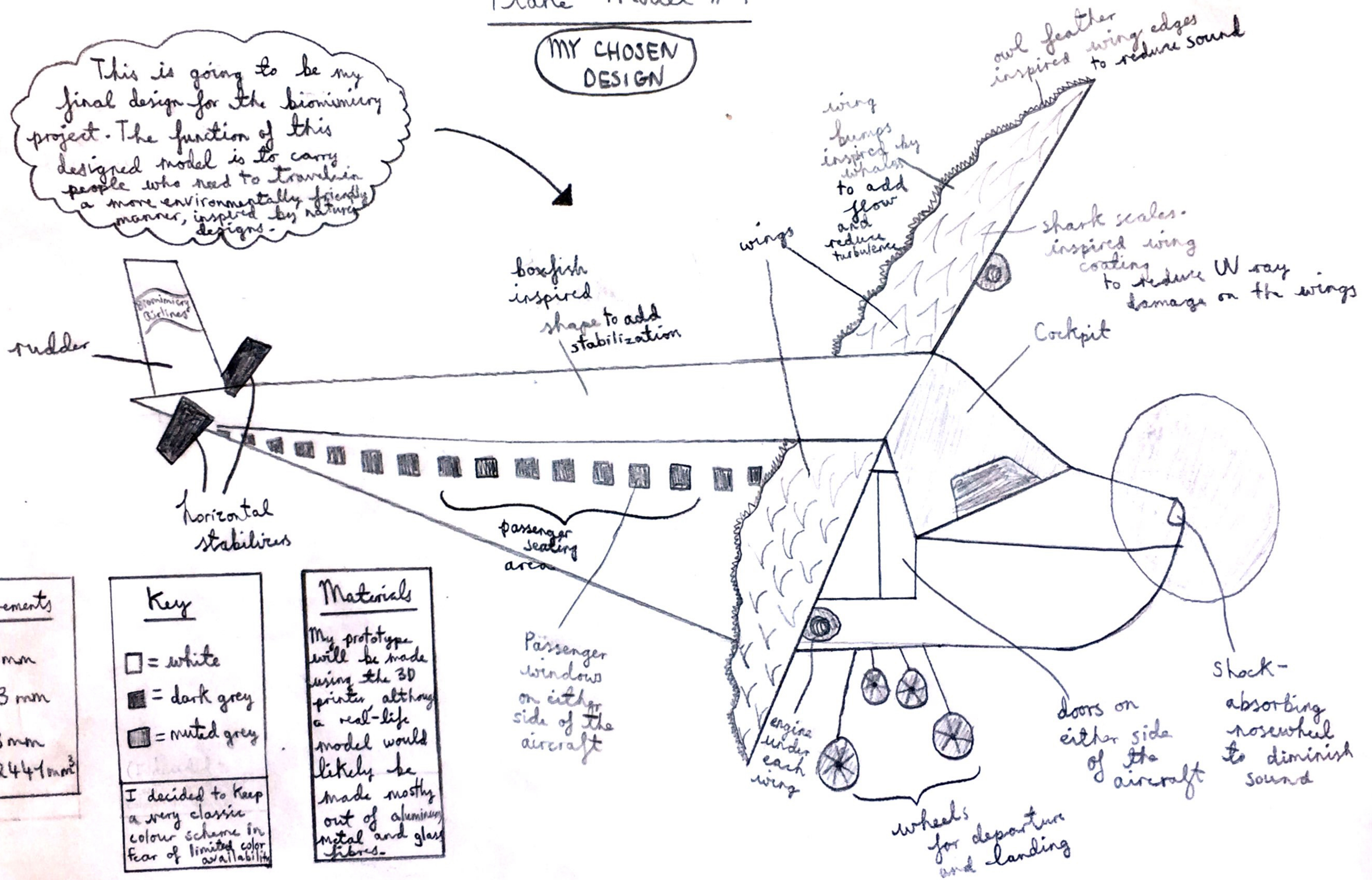
View from below



# Plane Model #1

MY CHOSEN DESIGN

This is going to be my final design for the biomimicry project. The function of this designed model is to carry people who need to travel in a more environmentally friendly manner, inspired by nature's designs.



Measurements  
 Width: 29 mm  
 Height: 13 mm  
 Length: 33 mm  
 Volume: 12441 mm<sup>3</sup>

Key  
 □ = white  
 ■ = dark grey  
 ◻ = muted grey  
 I decided to keep a very classic colour scheme in fear of limited color availability

Materials  
 My prototype will be made using the 3D printer, although a real-life model would likely be made mostly out of aluminium, metal and glass fibres.

\* Disclaimer: My drawing is inspired by the wikiHow "How to draw a plane" as I'm unfamiliar with the technical structures of a plane, although all ideas and designs are my own creation.